

## Newman Farm Update—Calendar Year 2022



The following summary report is from The Farmlands Trust (Greater Victoria) Society which outlines our key activities at Newman Farm during the period of the calendar year of 2022.

## Table of Contents

<b>1. Organizational Background .....</b>	<b>3</b>
<b>2. Agricultural Stewardship at Newman Farm.....</b>	<b>4</b>
<b>3. 2022 Activities .....</b>	<b>5</b>
<b>4. Cumulative Experience.....</b>	<b>17</b>
<b>5. Looking Ahead .....</b>	<b>19</b>
<b>Appendix A: Background information about the Newman Farm License Agreement .....</b>	<b>21</b>
<b>Appendix B: Current Site Plan of Newman Farm Property .....</b>	<b>22</b>

---

**The Farmlands Trust (Greater Victoria) Society**

PO Box 9 Saanichton, BC V8M-2C3

[farmlandstrust@gmail.com](mailto:farmlandstrust@gmail.com)

[www.farmlandstrust.org](http://www.farmlandstrust.org)

<https://www.facebook.com/The-Farmlands-Trust-Society>

[@FarmlandsTrust](https://www.facebook.com/FarmlandsTrust)

FLT Society Charitable Number: 80839 3359 RR0001

## 1. Organizational Background

Founded in 2008, [The Farmlands Trust \(Greater Victoria\) Society](#) [FLT Society] is a charitable not-for-profit organization based in Saanichton, BC—Registered Charity #80839 3359 RR0001.

Our [mission](#) is to enhance farming capacity in the Greater Victoria area by

- protecting local farmland,
- protecting eco-sensitive and culturally special areas,
- producing food for those in need,
- providing relevant educational opportunities,
- promoting the economic viability of farmland, and
- providing community access and public awareness programs.

The FLT Society is operated by a volunteer Board of Directors comprised of Greater Victoria community members who have a diverse array of competencies that enrich the planning and implementing of farmland preservation and local food security activities.

The FLT Society team is also comprised of an honorary Patron, Founder, volunteer community advisor, Newman Farm volunteer at-large, part-time farm manager, part-time farm assistants, contracted landscaper and contracted webmaster/social media specialist.

**The FLT Society is a recognized model for sustainable farming and food re-distribution in the Greater Victoria region, using national award-winning certified pollinator-friendly, sustainable farming and green gardening practices.**

---

**The Farmlands Trust (Greater Victoria) Society**

PO Box 9 Saanichton, BC V8M-2C3

[farmlandstrust@gmail.com](mailto:farmlandstrust@gmail.com)

[www.farmlandstrust.org](http://www.farmlandstrust.org)

[@FarmlandsTrust](https://www.facebook.com/The-Farmlands-Trust-Society)

[@FarmlandsTrust](https://www.facebook.com/The-Farmlands-Trust-Society)

FLT Society Charitable Number: 80839 3359 RR0001

## 2. Agricultural Stewardship at Newman Farm



From 2012 to present, the FLT Society is the agricultural steward of the [historic Newman Farm](#) in Saanichton, BC. As a charitable not-for-profit organization, the FLT Society continues to gradually return the 100+ year-old historic Farm to active agricultural uses.

### Did You Know?

The [District of Central Saanich](#) is the landowner of the historic Newman Farm in Saanichton, BC.

In May 2012, the FLT Society signed a [three year Letter of Understanding with the District of Central Saanich](#) to serve as stewards of a designated portion of Newman Farm off Central Saanich Road.

From October 2015 to present, the FLT Society is advancing a [10-year license agreement \(October 2015 – October 2025\) with the District of Central Saanich to continue the Society's agricultural stewardship of the historic Newman Farm](#).

The *License to occupy for agricultural park purposes* agreement facilitates the future long term stewardship of the historic Newman Farm. Please refer to Appendices A and B for an excerpt of said agreement and a map of the current licensed area.

During this time, the FLT Society team installed an irrigation line and deer fencing; pruned, ploughed, planted, harvested produce at the historic Farm; installed a new fruit orchard; installed 30+ raised garden beds (for assorted vegetables and herbs); and installed a small greenhouse as part of the FLT Society's "field to plate" initiative—where fresh produce grown and harvested at Newman Farm is primarily shared with Our Place Society.

---

**The Farmlands Trust (Greater Victoria) Society**

PO Box 9 Saanichton, BC V8M-2C3

[farmlandtrust@gmail.com](mailto:farmlandtrust@gmail.com)

[www.farmlandtrust.org](http://www.farmlandtrust.org)

[@FarmlandsTrust](https://www.facebook.com/The-Farmlands-Trust-Society)

[@FarmlandsTrust](https://www.facebook.com/The-Farmlands-Trust-Society)

FLT Society Charitable Number: 80839 3359 RR0001

**As a pollinator and agricultural advocate**, the FLT Society engages in certified environmental, pollinator-friendly, wildlife-friendly sustainable farming and green gardening practices—includes the “field of dreams” sunflower and wildflower field; installation and maintenance of a pollinator garden; installation and maintenance of hedgerows.

**As part of the regional food supply chain**, via the “field to plate” initiative, the FLT Society grows, harvests and re-distributes fresh local produce at Newman Farm to food insecure populations (for example, homeless people and individuals living in poverty) in the Greater Victoria region (Sooke to Sidney, BC).

### 3. 2022 Activities

In 2022, we focused our initiatives on producing food for those in need and protecting eco-sensitive areas.

#### FLT Society “Field to Plate” Initiative



- The FLT Society’s “field to plate” initiative at the historic Newman Farm is a provider of food for vulnerable populations—as part of the Greater Victoria food supply chain for food insecure populations. This is part of our long-term commitment to provide agricultural stewardship (2015—2025) on a three-acre licensed portion of the Farm.
- During the 2022 farm season, we continued to focus our efforts on our “field to plate” initiative (producing apples, assorted herbs, assorted squash, beets, cabbage, carrots, cucumbers, garlic, kale, leeks, lettuce, onions, pears and turnips).

**In 2022, the FLT Society grew, harvested and shared 12,912 lbs., worth over \$75,000 of fresh local produce.**

### Did You Know?

**From 2014 – 2022, our cumulative “field to plate” initiative total has reached 102,684 lbs. of produce grown, harvested and shared with food insecure populations in the Greater Victoria region, worth \$315,660.98**

- The primary recipient of the “field to plate” initiative is [Our Place Society](#)—linking food production with a local homeless shelter and regional meal and snack program that serves the Pandora Street dining facility location and an additional 11 supportive housing sites across the Greater Victoria region to aid in relieving poverty and mitigating food insecurity for marginalized populations in society.



Since 2014, the FLT Society annually supplies produce to Our Place Society which transforms into an estimated 1,200+ daily meals and snacks throughout the summer and fall.

- We installed additional raised garden boxes and now have over 30 raised garden beds. This provides more growing space at the Farm which extends our “field to plate” initiative into the fall season each year.



---

**The Farmlands Trust (Greater Victoria) Society**

PO Box 9 Saanichton, BC V8M-2C3

[farmlandstrust@gmail.com](mailto:farmlandstrust@gmail.com)

[www.farmlandstrust.org](http://www.farmlandstrust.org)

[@FarmlandsTrust](https://www.facebook.com/The-Farmlands-Trust-Society)

[@FarmlandsTrust](https://www.facebook.com/The-Farmlands-Trust-Society)

FLT Society Charitable Number: 80839 3359 RR0001

- In 2022, we also installed a small greenhouse that allows us to start young plants at the beginning of the growing season in a semi-controlled environment.



- In recognition of the important role that trees play in aesthetics, air quality, soil and water conservation and protection of the environment, a 30+ fruit tree orchard at Newman Farm continues to flourish with in-kind expert guidance and support from [Bartlett Tree Experts](#) who maintain the health of the orchard. The orchard provides another food source to share with vulnerable populations in the Greater Victoria region.



---

**The Farmlands Trust (Greater Victoria) Society**

PO Box 9 Saanichton, BC V8M-2C3

[farmlandstrust@gmail.com](mailto:farmlandstrust@gmail.com)

[www.farmlandstrust.org](http://www.farmlandstrust.org)

[@FarmlandsTrust](https://www.facebook.com/The-Farmlands-Trust-Society)

[@FarmlandsTrust](https://www.facebook.com/The-Farmlands-Trust-Society)

FLT Society Charitable Number: 80839 3359 RR0001

## Certified Farm Practices



- The FLT Society’s licensed area of Newman Farm is certified by the [Canadian Agricultural Partnership](#) for completing an environmental farm plan assessment, is a certified bee-friendly farm via [Pollinator Partnership](#) and is a certified wildlife-friendly habitat via the [Canadian Wildlife Federation](#).
- Every year at the Newman Farm, we plant a portion of our lands into a pollinator-friendly meadow; including sunflowers, wildflowers, buckwheat and clover. This beautiful display of flowers is an attractant for birds and bees from the local agricultural lands to support pollination activity. A series of lavender beds and assorted pollinator-friendly flowers and crops are also thriving as part of our [national award-winning certified bee-friendly farming program](#).
- As part of our certified wildlife-friendly habitat practices, we have bird baths on site at the Farm, provide shelter for wildlife (for example, potted plants, shrubs and rock pile), use green gardening practices (for example, limited water use via irrigation on timers) and use sustainable (gardening) practices (for example, integrated pest management, invasive plant removal, use of native plants).



***The FLT Society’s licensed area of Newman Farm is a certified bee-friendly farm via the Pollinator Partnership Bee-Friendly Farming Program.***



---

**The Farmlands Trust (Greater Victoria) Society**

PO Box 9 Saanichton, BC V8M-2C3

[farmlandstrust@gmail.com](mailto:farmlandstrust@gmail.com)

[www.farmlandstrust.org](http://www.farmlandstrust.org)

[@FarmlandsTrust](https://www.facebook.com/The-Farmlands-Trust-Society)

[@FarmlandsTrust](https://www.facebook.com/The-Farmlands-Trust-Society)

FLT Society Charitable Number: 80839 3359 RR0001



*The FLT Society is also a certified wildlife-friendly habitat via the Canadian Wildlife Federation.*



## Certified Wildlife-friendly Habitat

Canadian Wildlife Federation would like to recognize

**The Farmlands Trust (Greater Victoria) Society**

for outstanding effort in helping  
wildlife through the creation of habitat



### Farm Management and Operations



**The Farmlands Trust (Greater Victoria) Society**

PO Box 9 Saanichton, BC V8M-2C3

[farmlandstrust@gmail.com](mailto:farmlandstrust@gmail.com)

[www.farmlandstrust.org](http://www.farmlandstrust.org)

<https://www.facebook.com/The-Farmlands-Trust-Society>

[@FarmlandsTrust](https://www.facebook.com/FarmlandsTrust)

FLT Society Charitable Number: 80839 3359 RR0001

### Safety First

**Farm operation and COVID-19 safety protocols continue to be in place at Newman Farm with volunteers (employers and citizens in the Greater Victoria region) who support the Newman Farm Manager and his farm assistants with spring planting, summer garden maintenance, fall harvesting and winterizing operations.**

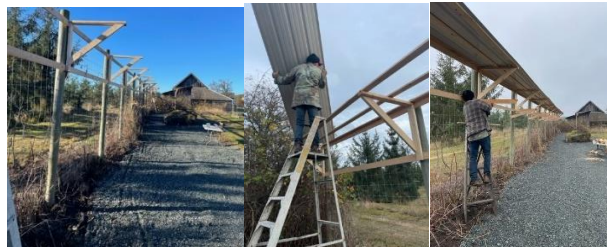
- The 2022 farm season was marked by a cold spring which meant a late planting in June 2022. From there, the dry weather in the summer and fall extended the farm season until early November 2022.

In spite of these weather challenges, the FLT Society Farm Manager and his farm assistants diligently planted, maintained and harvested a diverse array of produce at the Farm.

- In 2022, the FLT Society installed a gazebo at Newman Farm. The gazebo provides a comfortable, cool and dry place to relax and enjoy the tranquility of the Farm.



- In 2022, the FLT Society team installed a shelter for the fall/winter storage of our irrigation lines. This greatly assists us in protecting our irrigation lines from inclement weather during the off season.



---

**The Farmlands Trust (Greater Victoria) Society**

PO Box 9 Saanichton, BC V8M-2C3

[farmlandstrust@gmail.com](mailto:farmlandstrust@gmail.com)

[www.farmlandstrust.org](http://www.farmlandstrust.org)

[@FarmlandsTrust](https://www.facebook.com/The-Farmlands-Trust-Society)

[@FarmlandsTrust](https://www.facebook.com/The-Farmlands-Trust-Society)

FLT Society Charitable Number: 80839 3359 RR0001

## Volunteerism at Newman Farm



- In 2022, the FLT Society hosted and supervised various small and medium scale seasonal volunteer work parties at the Farm. Local employers, families and friends, and citizens at large share their time and skills with the FLT Society.
- Key volunteer activities include preparing seeds and starter plants, managing weeds, organic fertilizing of plants, tidying up the two vegetable garden plots and 30+ raised garden beds at the Farm to support optimal growth; boxing and packing produce for donation to Our Place Society; and winterizing the Farm.

### **A “Tip of the Hat”: Victoria Lord, FLT Society Newman Farm Volunteer-at-Large**



**Volunteers are the backbone of many not-for-profit organizations like the FLT Society.**

**Therefore, the FLT Society Team would like to recognize one of our dedicated volunteers: Victoria Lord. She is a resident of Sidney, BC and is 86 years of age.**

**Under the supervision of FLT Society Newman Farm Manager Bert James, Victoria has been diligently volunteering her time and gardening talents at Newman Farm for the past several years.**

**She epitomizes in her actions the importance of giving back to the community, at the local and regional levels.**

---

**The Farmlands Trust (Greater Victoria) Society**

PO Box 9 Saanichton, BC V8M-2C3

[farmlandstrust@gmail.com](mailto:farmlandstrust@gmail.com)

[www.farmlandstrust.org](http://www.farmlandstrust.org)

[@FarmlandsTrust](https://www.facebook.com/The-Farmlands-Trust-Society)

[@FarmlandsTrust](https://www.facebook.com/The-Farmlands-Trust-Society)

FLT Society Charitable Number: 80839 3359 RR0001

The following is an excerpt from Geoff W.'s email message to the FLT Society. Geoff organized a volunteer work party with fathers and sons at Newman Farm in fall 2022...

*Everyone enjoyed both the work and the tour of the heritage area.*

*For me, a lot of memories came back of appliances at my grandparents in rural Manitoba.*

*Although labouring in a peaceful field might seem the last thing “screenagers” want to do, they had a great time!*

*The work was actually quite the treat for most of us whose lives seem to be operating at a frenetic pace, rushing around from activity to activity, juggling schedules and screens, and living so much in an intangible world of social media.*

*The simple task of picking up rocks, plunking them into a wheelbarrow, dumping them in a hole to help drainage, and covering it up with dirt gives a lot of contentment of something concrete that requires muscle and sweat.*



---

**The Farmlands Trust (Greater Victoria) Society**

PO Box 9 Saanichton, BC V8M-2C3

[farmlandstrust@gmail.com](mailto:farmlandstrust@gmail.com)

[www.farmlandstrust.org](http://www.farmlandstrust.org)

[@FarmlandsTrust](https://www.facebook.com/The-Farmlands-Trust-Society)

[@FarmlandsTrust](https://www.facebook.com/The-Farmlands-Trust-Society)

FLT Society Charitable Number: 80839 3359 RR0001

## Educational Walkabouts and Guided Tours



- From August 2022 to October 2022, the FLT Society team led a series of walkabouts and guided tours of Newman Farm which brings an experiential component of our charitable agricultural work with strategic partners, collaborators and funders.

Also, the [District of Central Saanich hosted an open house event in September 2022](#) for the public at large to visit Newman Farm.

- In 2022, the FLT Society Team was in the news about our charitable agricultural stewardship work at Newman Farm:
  - [Pollinator Partnership Article—Bee-Friendly Farming at Newman Farm: Reflections from The Farmlands Trust \(Greater Victoria\) Society](#)
  - [Central Saanich farm giving all its crops to those in need \(July 2022\)](#)
  - [Community: Historic Central Saanich farm feeds most vulnerable, September 2022](#)
  - [Provincial Employees Community Services Fund Blog Article: The FLT Society in the Charity Spotlight—Charities helping charities: Creating synergies in Greater Victoria's food supply chain, November 2022](#)

---

**The Farmlands Trust (Greater Victoria) Society**

PO Box 9 Saanichton, BC V8M-2C3

[farmlandstrust@gmail.com](mailto:farmlandstrust@gmail.com)

[www.farmlandstrust.org](http://www.farmlandstrust.org)

[@FarmlandsTrust](https://www.facebook.com/The-Farmlands-Trust-Society)

[@FarmlandsTrust](https://www.facebook.com/The-Farmlands-Trust-Society)

FLT Society Charitable Number: 80839 3359 RR0001

## Funding and Related Charitable Donations



- Many thanks to the following individuals and organizations who supported the FLT Society in 2022 with regard to farmland preservation and local food security protection activities in the Greater Victoria region, in particular, our work at Newman Farm in the form of financial and/or in-kind donations:
  - Arbutus Grove Nursery
  - Bartlett Tree Experts
  - BC Housing
  - Coast Capital Savings
  - District of Central Saanich
  - Farm to Garden Organics
  - Flagstone Fund through the Victoria Foundation
  - FLT Society donors/supporters (individuals and families)
  - Gobind Farms
  - Integrity Sales and Distributors
  - Nature's Path
  - Peninsula Co-op
  - Provincial Employees Community Services Fund
  - Royal Bank of Canada
  - Saanichton Farm
  - Sea Cider
  - Thrifty Foods
  - United Way of Southern Vancouver Island
  - Vancity Savings
  - Victoria Foundation (Vital Victoria Fund)
  - West Coast Seeds
  - Western Forest Products

---

**The Farmlands Trust (Greater Victoria) Society**

PO Box 9 Saanichton, BC V8M-2C3

[farmlandtrust@gmail.com](mailto:farmlandtrust@gmail.com)

[www.farmlandtrust.org](http://www.farmlandtrust.org)

<https://www.facebook.com/The-Farmlands-Trust-Society>

[@FarmlandsTrust](https://www.facebook.com/FarmlandsTrust)

FLT Society Charitable Number: 80839 3359 RR0001

- The FLT Society Board of Directors extends our sincere appreciation to the District of Central Saanich for granting our charitable not-for-profit society with a permissive tax exemption. The permissive tax exemption provides our charity with certainty as a means of advancing our agricultural stewardship activities at Newman Farm.



---

**The Farmlands Trust (Greater Victoria) Society**

PO Box 9 Saanichton, BC V8M-2C3

[farmlandstrust@gmail.com](mailto:farmlandstrust@gmail.com)

[www.farmlandstrust.org](http://www.farmlandstrust.org)

[@FarmlandsTrust](https://www.facebook.com/The-Farmlands-Trust-Society)

[@FarmlandsTrust](https://www.facebook.com/The-Farmlands-Trust-Society)

FLT Society Charitable Number: 80839 3359 RR0001

## 2022 Testimonial from Our Place Society



November 18, 2022

Dr. Natasha Caverley, Secretary  
Board of Directors, Farmlands Trust (Greater Victoria) Society  
PO Box 9,  
Saanichton, BC V8M 2C3

Dear Natasha,

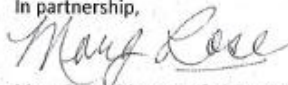
What a banner year for Farmlands Trust (FLT) this year, working the fields at the historic Newman Farm in a near drought, but providing a record amount of fresh produce for the talented culinary team at Our Place Society to nourish thousands of folks facing tough times. Suppliers had warned us of the potential 30% rise in food costs for some key items, as well as supply chain issues, so your selfless labours of love were even more important and welcome this year to bolster food security.

From January 1 to October 31 2022, Our Place Society served 311,005 meals. Only 39 of those meals were sponsored by external groups this year, due to ongoing COVID concerns about shared space in our busy dining hall downtown, so the FLT contributions were absolutely vital. Your Society is bolstering nutrition and reducing our massive food budget through the provision of local nutritious, organic vegetables, fruit and herbs. I see 14 categories listed in the tally of 12,912 pounds of produce, conservatively valued at \$75,479.84 that your group provided to our kitchen staff. Astounding work.

It was an absolute pleasure to meet a few members of your Board, and the charismatic Bert, farm manager, in person this fall when I brought a team to volunteer. Please extend our kudos to your team for persevering through the vestiges of the recent heat dome climate change, surprise scavenging by roaming deer, a limited water supply and procuring volunteer labour. We will be recognizing on various media outlets your cumulative milestone of achieving the Society's "field to plate" initiative total that has reached 102,684 lbs. of produce grown, harvested and shared with Our Place Society, worth \$315,660.98 from 2014 to the close of the harvest this year. Another stunning achievement.

I applaud your own and your Treasurer Brian's detailed tracking of the outputs and valuation of your produce. The tally understates the volunteer hours also contributed in meetings and labour. We'd be happy to come to one of your meetings (in person or virtually) to express our heartfelt appreciation. We greatly value our positive relationship, and look forward to a discussion on shared goals for 2023.

In partnership,



Marg Rose, Director of Philanthropy  
On behalf of Julian Daly, CEO

---

**The Farmlands Trust (Greater Victoria) Society**

PO Box 9 Saanichton, BC V8M-2C3

[farmlandstrust@gmail.com](mailto:farmlandstrust@gmail.com)

[www.farmlandstrust.org](http://www.farmlandstrust.org)

[@FarmlandsTrust](https://www.facebook.com/The-Farmlands-Trust-Society)

[@FarmlandsTrust](https://www.facebook.com/The-Farmlands-Trust-Society)

FLT Society Charitable Number: 80839 3359 RR0001



## 4. Cumulative Experience

***With the rising cost of food, engaging in the regional food supply chain and food redistribution has become increasingly important and urgent, particularly for individuals who are food insecure and/or living below the poverty line.***

- The FLT Society “field to plate” food re-distribution initiative assists Our Place Society and its expanding regional meal and snack programs which include the 919 Pandora Avenue dining facilities and 11 additional supportive housing sites across Greater Victoria.
- The following table provides an overview of annual weight and dollar value equivalent for food grown and harvested as part of the FLT Society’s “field to plate” initiative at Newman Farm.

### **FLT Society Newman Farm “Field to Plate” Initiative Summary (2014 – 2022)**

<b>Year</b>	<b>Amount/Weight (in lbs.)</b>	<b>Value (in \$)</b>
2014	3,500 lbs.	\$ 7,005.00
2015	2,400 lbs.	\$ 4,900.00
2016	7,580 lbs.	\$16,005.00
2017	15,830 lbs.	\$32,373.75
2018	17,585 lbs.	\$38,147.60
2019	18,127 lbs.	\$54,711.50
2020	7,369 lbs.	\$24,353.79
2021	17,381 lbs.	\$62,685.50
2022	12,912 lbs.	\$75,478.84
<b>TOTAL TO DATE</b>	<b>102,684 lbs.</b>	<b>\$315,660.98</b>

*Notes:*

1. 2013/2014 was the pilot testing phase of the FLT Society’s “field to plate” initiative at Newman Farm.
2. 2014 – 2019 heavily focused on assorted squash as the “menu options” for food grown at Newman Farm - based on consultations between FLT Society representative(s) and Our Place Society.
3. Newman Farm 10 year license agreement signed in 2015 between the District of Central Saanich (Newman Farm landowner) and the FLT Society (licensee). As such, the FLT Society is the agricultural steward of a licensed area of Newman Farm from 2015 to 2025.
4. In 2016, Bert James was retained to provide FLT Society Newman Farm management services. Bert’s work has continued from 2016 to present.

---

**The Farmlands Trust (Greater Victoria) Society**

PO Box 9 Saanichton, BC V8M-2C3

[farmlandstrust@gmail.com](mailto:farmlandstrust@gmail.com)

[www.farmlandstrust.org](http://www.farmlandstrust.org)

[@FarmlandsTrust](https://www.facebook.com/The-Farmlands-Trust-Society)

[@FarmlandsTrust](https://www.facebook.com/The-Farmlands-Trust-Society)

FLT Society Charitable Number: 80839 3359 RR0001

5. From 2020 to present, Our Place Society and the FLT Society Newman Farm Manager updated the “menu options” to diversify produce grown at Newman Farm - based on the expanded regional meal and snack programs offered by Our Place Society across the Greater Victoria region.

6. The World Health Organization declared COVID-19 a pandemic on March 11, 2020. The FLT Society’s program aligns with BC Government pandemic essential services: service provider for vulnerable populations and provider of food and agriculture - as part of the Greater Victoria food supply chain for marginalized peoples. Access to and from Newman Farm by volunteers during the 2020 and 2021 farm season was restricted due to provincial health orders on safe distancing, etc. Farm operation protocols and COVID-19 protocols were established in adherence with provincial health orders which facilitated the FLT Society to continue safely operating during the 2020 and 2021 farm seasons. Part time farm labour assistance was coordinated by the FLT Society to support the FLT Society Newman Farm Manager during the 2020 and 2021 farm seasons.

7. From 2013 to present, the FLT Society team recognizes and endeavours to adapt to the annual effects of extreme weather conditions and related climate change considerations. In particular, drought and windy conditions at Newman Farm during the annual farm season placed stress on the soil, produce, and pollinator-friendly plants. In 2021, British Columbia experienced a “heat dome” in late June/early July 2021 - with an extended drought for the remainder of summer 2021.

8. *Canada’s Food Price Report* (11<sup>th</sup> Edition) and subsequent reports highlighted the increased cost in food in Canada for the year 2021 - due to the impacts of the COVID-19 pandemic on the entire agricultural food supply chain as well as the growing impacts of climate change on agriculture and related farming practices in Canada.

9. From 2013 to present, harvesting calculations with corresponding market value price are carried out as follows:

*For produce weight calculations and interrater reliability of said calculations*, FLT Society representative(s) and Brian Cox (Our Place Society) calculate same. From 2020 to present, a minimum of two FLT Society representatives engage in weight calculations for the weekly harvest tallies.

*For market value calculations*, a minimum of two FLT Society representatives calculate same based on the *FLT Society Farmer Resource Guide* and annual southern Vancouver Island and/or BC-based annual organic produce price lists.

Our Place Society annually attests to the weight calculations (lbs.) via Brian Cox, while Marg Rose (or designate) annually attests to the market value calculations (\$) for produce donated by the FLT Society via the “field to plate” initiative at the historic Newman Farm.

10. The 2022 farm season was marked by a cold spring which meant a late planting in June 2022. From there, the dry weather in the summer and fall extended the farm season until early November 2022. The Year 2022 was also marked by historically high costs (market value) for accessing nutritious food due to global inflation which disproportionately affects individuals and families living at or below the poverty line in society.

---

**The Farmlands Trust (Greater Victoria) Society**

PO Box 9 Saanichton, BC V8M-2C3

[farmlandstrust@gmail.com](mailto:farmlandstrust@gmail.com)

[www.farmlandstrust.org](http://www.farmlandstrust.org)

[@FarmlandsTrust](https://www.facebook.com/The-Farmlands-Trust-Society)

[@FarmlandsTrust](https://www.facebook.com/The-Farmlands-Trust-Society)

FLT Society Charitable Number: 80839 3359 RR0001

## 5. Looking Ahead

In 2023, the FLT Society Board is proposing the following activities:

- **“Field to Plate” Initiative - Crop Production Program.** The FLT Society is sustaining its licensed area cultivated by continuing to (1) diversify crops, which includes purchasing gardening supplies and equipment; (2) expand the range of produce that we grow in the coming years; (3) expand the raised garden bed program; and (4) maintain the FLT Society fruit orchard.
- **“Field of Dreams” and Agricultural Best Practices - Certified Bee-Friendly Farming/Pollinator and Certified Wildlife-Friendly Habitat Program Activities.** This includes continuing to offer forage—providing good nutrition for native bees on approximately 30% of the licensed area. To conduct and maintain this program requires planting a continuous bloom of different flowering plants throughout the growing season, especially in early spring, offering a clean water source for bees, providing a variety of habitats for nesting and mating utilizing hedgerows, natural brush, and buffer strips, and practicing Integrated Pest Management—using no chemicals on the Farm. This program requires an annual maintenance and revitalization program to operate these activities using pollinator-friendly and wildlife-friendly habitat wise practices.
- **Irrigation Management.** Repair, maintain and update our irrigation line and watering systems at Newman Farm to support optimal food growth (includes our fruit orchard, raised garden boxes) and our national award-winning certified bee-friendly farming practices. The FLT Society maintains the water line on the designated portion of Newman Farm that we manage, and we also monitor any risks of deficiencies in the irrigation system infrastructure throughout the growing season. Irrigation line upgrading supports our “field to plate” initiative along with our award-winning certified bee-friendly farm and wildlife-friendly habitat practices on our three-acre+ Farm.
- **Volunteerism.** We will continue our supervised small and medium scale volunteer work parties at Newman Farm during the 2023 farm season with local citizens and employers.

---

**The Farmlands Trust (Greater Victoria) Society**

PO Box 9 Saanichton, BC V8M-2C3

[farmlandstrust@gmail.com](mailto:farmlandstrust@gmail.com)

[www.farmlandstrust.org](http://www.farmlandstrust.org)

[@FarmlandsTrust](https://www.facebook.com/The-Farmlands-Trust-Society)

[@FarmlandsTrust](https://www.facebook.com/The-Farmlands-Trust-Society)

FLT Society Charitable Number: 80839 3359 RR0001

***Interested in knowing more about the FLT Society and Newman Farm?***

Visit our website: [www.farmlandtrust.org](http://www.farmlandtrust.org)

Volunteer with the FLT Society: <http://farmlandtrust.org/join-us>

Donate to the FLT Society: <http://farmlandtrust.org/donate>

Join us on Twitter: @FarmlandsTrust

Join us on Facebook: The Farmlands Trust Society

Email us: [farmlandtrust@gmail.com](mailto:farmlandtrust@gmail.com)

PO Box 9 Saanichton, BC V8M-2C3

***Many thanks to our FLT Society Founder, Patron, Board of Directors, Community Advisor, Volunteers-at-Large, Farm Manager, Farm Assistants, Landscaper, Webmaster/Social Media Specialist, Newman Farm Volunteers, Donors and Funders, and Supporters for your unwavering commitment to regional farmland preservation and local food security protection in Greater Victoria!***

Sincerely,  
FLT Society Board of Directors

*Note: Photo contributions for the 2022 Newman Farm Summary Report are courtesy of Natasha Caverley (FLT Society Board Secretary) and Bert James (FLT Society Farm Manager).*

## Appendix A: Background information about the Newman Farm License Agreement

### LICENSE TO OCCUPY FOR AGRICULTURAL PARK PURPOSES

THIS AGREEMENT (this “Agreement”) dated for reference August 20, 2019,

**BETWEEN: THE CORPORATION OF THE DISTRICT OF CENTRAL SAANICH**  
1903 Mount Newton Cross Road,  
Saanichton, British Columbia, V8M 2A9

(the “District”)

**AND: THE FARMLANDS TRUST (GREATER VICTORIA) SOCIETY** (Inc. No. S-0053429)  
P.O. Box 9  
Saanichton, British Columbia, V8M 2C3

(the “Licensee”)

WHEREAS:

- A. The District is the registered owner of that parcel of land known as the Newman Farm located in the District of Central Saanich and legally described as:

Parcel Identifier: 009-396-985

Those Parts of Section 3, Ranges 3 and 4 East, South Saanich District, Lying to the South of Parcel K (DD 477991) of Said Sections, and to the East of the Road Dedicated by Plan 7532, except Part in Plans 3 RW, 2306 RW and 2319 RW

(the “Park”);

- B. The portion of the Park named Upper Field and Mid Field Remnant highlighted on the plan attached as Schedule A hereto, comprising approximately 1.3 ha, called the “License Area”;
- C. The Licensee wishes to be granted a license and the District wishes to grant a license of the License Areas for the Licensee to establish and operate a productive organic farm dedicated to enhancing local food security through sustainable practices and community engagement, and preserving the cultural heritage of the License Areas, on the terms and conditions of this Agreement;

NOW THEREFORE in consideration of the covenants and agreements hereinafter set forth, and other good and valuable consideration (the receipt and sufficiency of which is hereby acknowledged by the Parties), the District and the Licensee (collectively, the “Parties” and individually, a “Party”) hereby covenant and agree as follows:

*Source: Excerpt from updated license agreement between the District of Central Saanich and the FLT Society – signed August 20, 2019.*

---

**The Farmlands Trust (Greater Victoria) Society**

PO Box 9 Saanichton, BC V8M-2C3

[farmlandstrust@gmail.com](mailto:farmlandstrust@gmail.com)

[www.farmlandstrust.org](http://www.farmlandstrust.org)

[@FarmlandsTrust](https://www.facebook.com/The-Farmlands-Trust-Society)

[@FarmlandsTrust](https://www.facebook.com/The-Farmlands-Trust-Society)

FLT Society Charitable Number: 80839 3359 RR0001

## Appendix B: Current Site Plan of Newman Farm Property

*Note: FLT Society licensed area is in the Upper Farm – ALR (upper field and mid field remnant areas of Newman Farm).*

### SCHEDULE A SKETCH PLAN OF LICENSE AREAS

